

# MagicRig

## HDSLR video bracket

### USER MANUAL

EN

#### 1. Foreword

Thanks for purchasing MagicRig. With this new bracket, shooting video has never been easier. Using strong materials built in line with human ergonomics, it gives all the stability, flexibility, and comfort that you need to make great films. Please refer to the instruction manual for a better understanding of the MagicRig, and to enhance your shooting experience.

#### 2. Function Summary

##### 2.1 Summary

MagicRig is a new bracket giving you balance, stability, and comfort when you need it most. Compatible with HDSLRs and camcorders, its versatile and convenient. Easy to assemble, the MagicRig is a modular system which can suit your individual requirements. It fits snugly on your shoulder, giving you more control over your video. Made of durable aluminum alloy and stainless steel, the bracket is built to last. Filmmaking will never be the same with the MagicRig in hand.

##### 2.2 Main Features

- 2.21 Stable shooting platform
- 2.22 Multiple assembly options
- 2.23 High strength aluminum alloy and stainless steel
- 2.24 Easy to assemble and take apart
- 2.25 Comfortable user experience

##### 2.3 Purchasing Options

###### 2.31 Version One (V1)

Single handed shooting. The camera direction can be easily adjusted by sliding the Camera Mount and rotating the Shoulder Brace.

###### 2.32 Version Two (V2)

Complex single handed shooting. Based on V1, additional accessories include Shoulder Pad, Waist Belt for extra support and Focus Adjuster which you can use to manually focus your lens.

###### 2.33 Version Three (V3)

Two handed shooting. Based on V2, additional accessories include C-type support, LCD and Microphone Mount for a complete shooting experience.

**Note: There are three different assembly options. You can choose according to your own individual requirements. Additional parts are available when you need to upgrade them.**

#### 3. Notice

##### 3.1 Fasten the screws tightly for maximum safety

To prevent your camera from falling off or other components from coming loose, please ensure the screws are fastened tightly during assembly.

##### 3.2 Set lens to manual focus mode

While using the MagicRig to focus, the lens must be set to manual focus mode. Otherwise, the lens motor may be damaged.

##### 3.3 Carefully assembly the plastic focus ring

To ensure smooth focus, proper installation should be followed. First, fix the plastic ring around the lens. The screws should be moderately fastened - not too tight and not too loose. Then affix the camera to the camera mount.

##### 3.4 Ensure Waist Support Bar, Belt, and Shoulder Pad are adjusted properly to avoid bodily harm

These components should be adjusted to distribute weight and pressure in a comfortable manner, which can prevent injury and physical discomfort of the photographer, as well as increase the

stability of the video shoot.

#### 4. Specifications

Version	Color	Specification (Package)	Net Gross	Material			Construction
				Aluminum alloy	Plastic	Stainless Steel	
V1	Black, Orange	350*170*100MM	640G	88%	10%	2%	Hard Anodized
V2	Black, Orange	450*340*180MM	1895G	76%	20%	4%	Hard Anodized
V3	Black, Orange	450*340*180MM	2785G	80%	15%	5%	Hard Anodized

#### 5. Safety Precautions

In order to prevent product damage, disfunction, or bodily injury while using the product, please carefully read the following safety precautions.

##### 5.1 Do not disassemble completely

As the product's structure is complex, please don't disassemble completely. Otherwise changes in the structure may result in defectiveness and improper functioning.

##### 5.2 Keep dry

Keep the product out of the rain for extended periods of time. Otherwise the colors may fade.

##### 5.3 Do not expose to flammable gas

Do not expose to flammable gas. Otherwise some components, such as the plastics, fabrics, and padding may burn and melt.

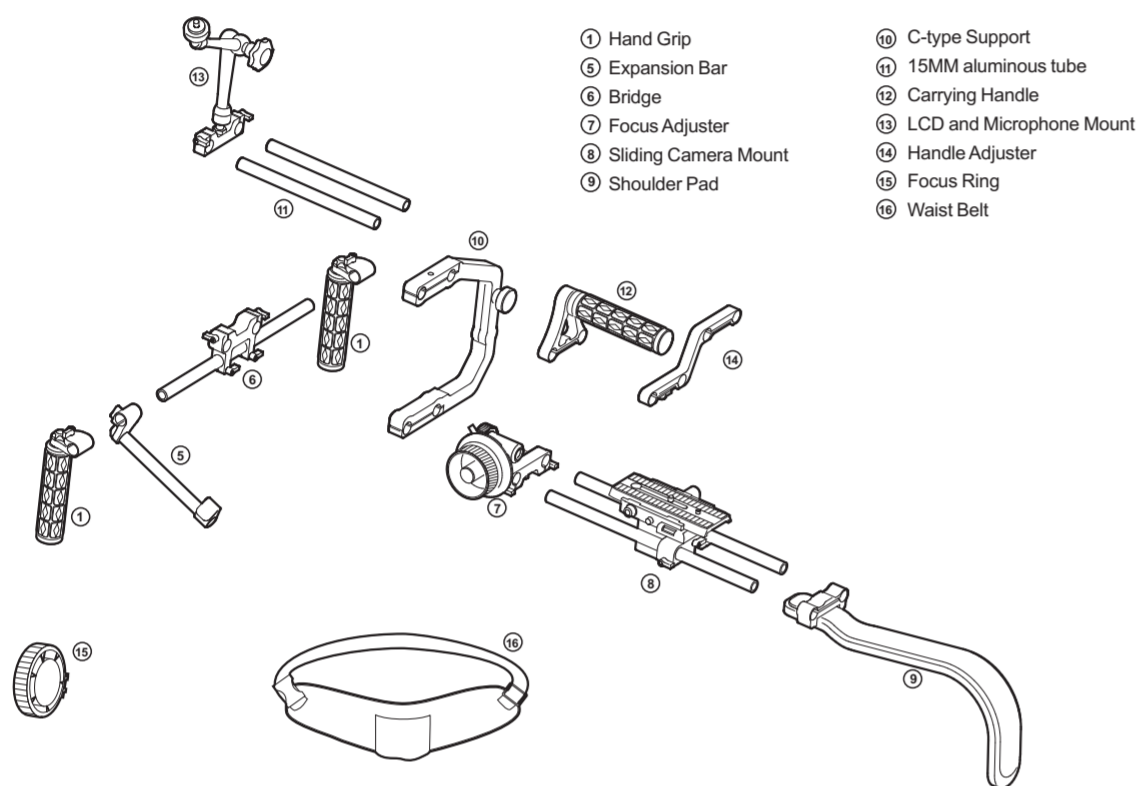
##### 5.4 Keep away from children

This product is large and heavy. A child may swallow loose screws or become injured while playing with it.

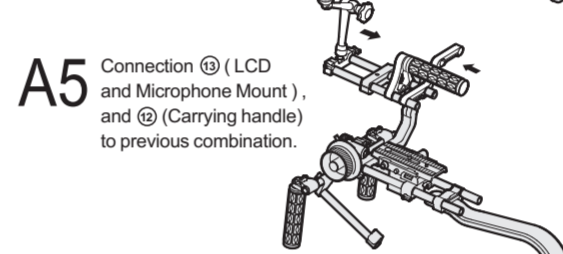
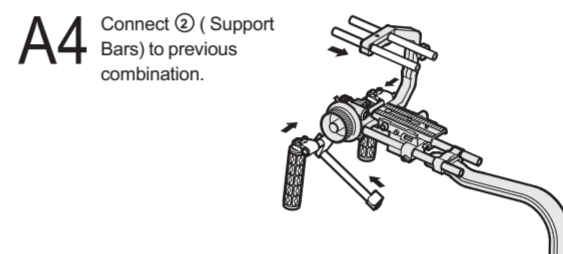
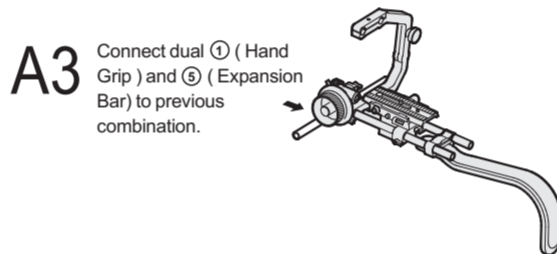
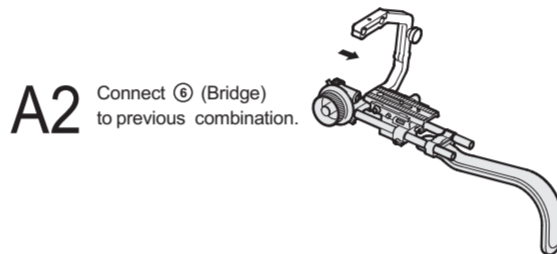
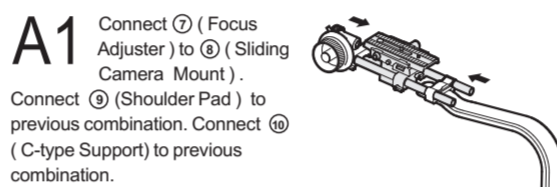
#### 6. Components consult chart

Component	V1 components	V2 components	V3 components
① Hand Grip	✓	✓	✓
② Support Bar	✓		
③ Camera Mount	✓		
④ Shoulder Brace	✓		
⑤ Expansion Bar		✓	✓
⑥ Bridge		✓	✓
⑦ Focus Adjuster		✓	✓
⑧ Sliding Camera Mount		✓	✓
⑨ Shoulder Pad		✓	✓
⑩ C-type Support			✓
⑪ 15MM aluminous tube			✓
⑫ Carrying Handle			✓
⑬ LCD and Microphone Mount			✓
⑭ Handle Adjuster			✓
⑮ Focus Ring			✓
⑯ Waist Belt		✓	✓

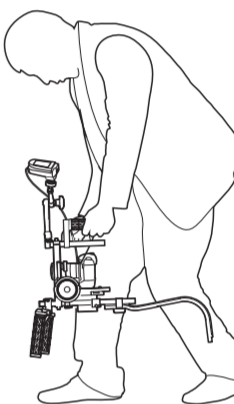
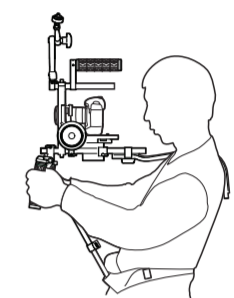
V3



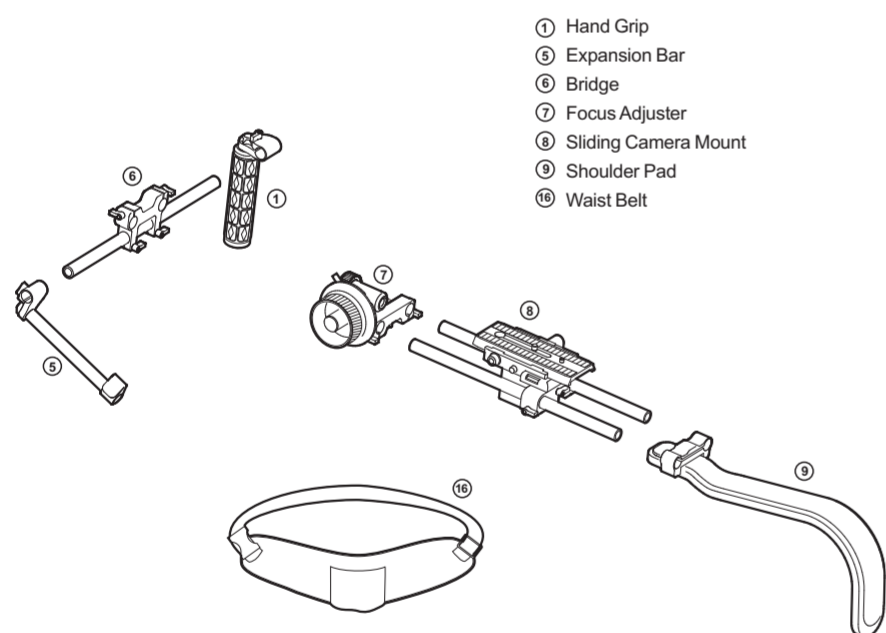
#### Setup Procedures (refer to illustration)



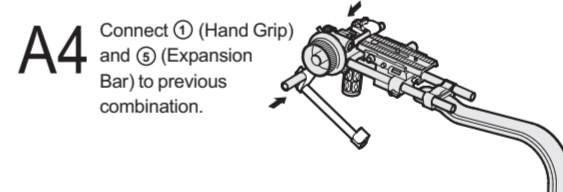
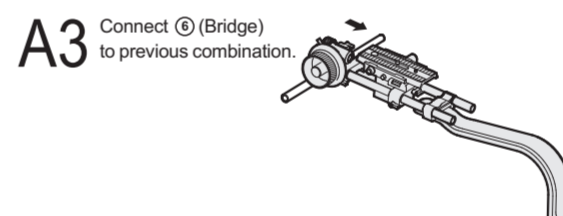
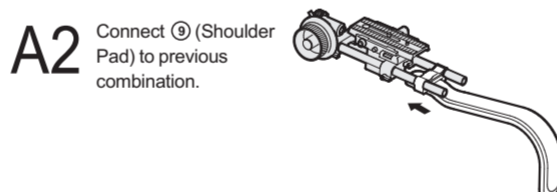
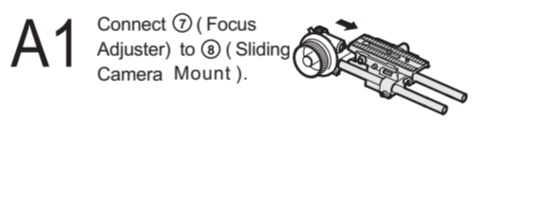
#### Instructional Illustrations



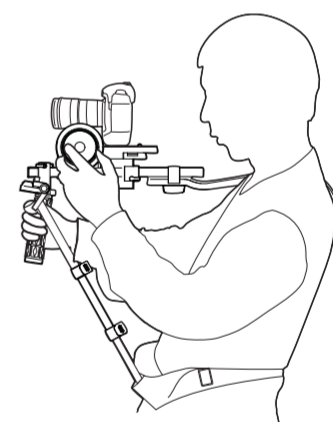
V2



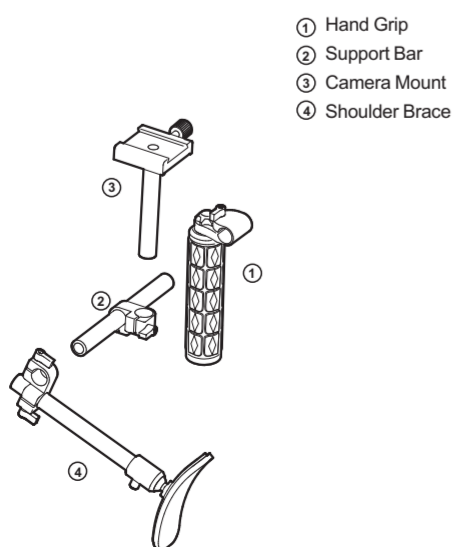
#### Setup Procedures (refer to illustration)



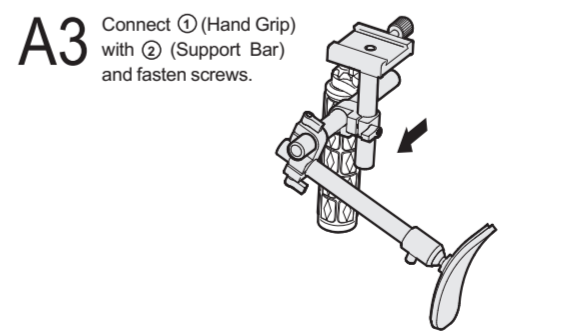
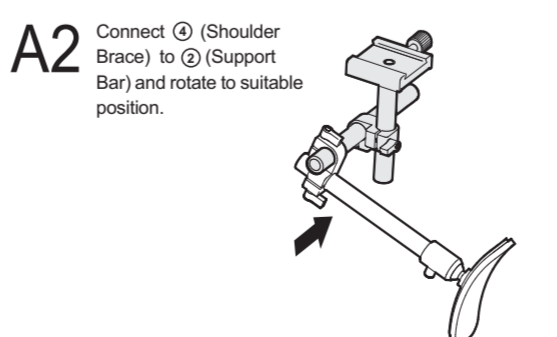
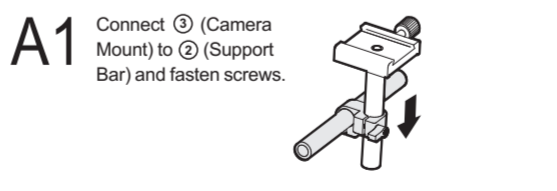
#### Instructional Illustrations



V1



#### Setup Procedures (refer to illustration)



#### Instructional Illustrations

